

Bluebird

Hospital Integration

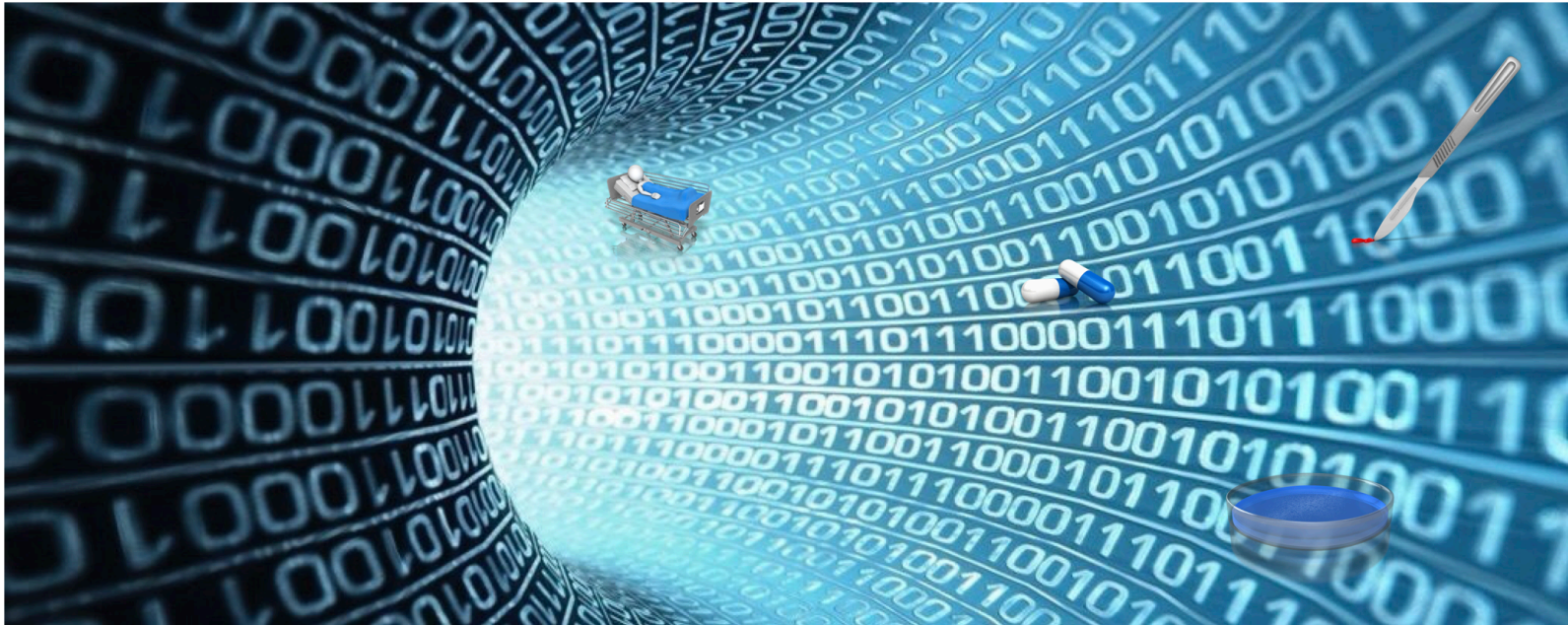


Table of Contents

Introduction	3
Virtual Hospital	4
Users	5
Admission Discharge Transfer	6
Pharmacy	7
Surgery	8
Laboratory	9

Introduction

The first step in setting up Bluebird is to re-create your hospital as a **virtual hospital** in the Bluebird Cloud.

We then need to set up each **User** with secure access to Bluebird.

Although all clinical data can be entered directly into Bluebird it is *much* more efficient if data already collected in your hospital IT systems can be piped into Bluebird using HL7 messages that are sent to the Bluebird HL7 listener. Possible **data pipes** (red are mandatory) include:

- **Admission Discharge Transfer** messages from your Hospital Information System (HIS)
- **Dispensing** Messages from your Pharmacy Information System
- Surgical Messages from your OR Information System
- Device messages from your Hospital Information System (HIS)
- **Laboratory** Messages from the Laboratory Information System (LIS).

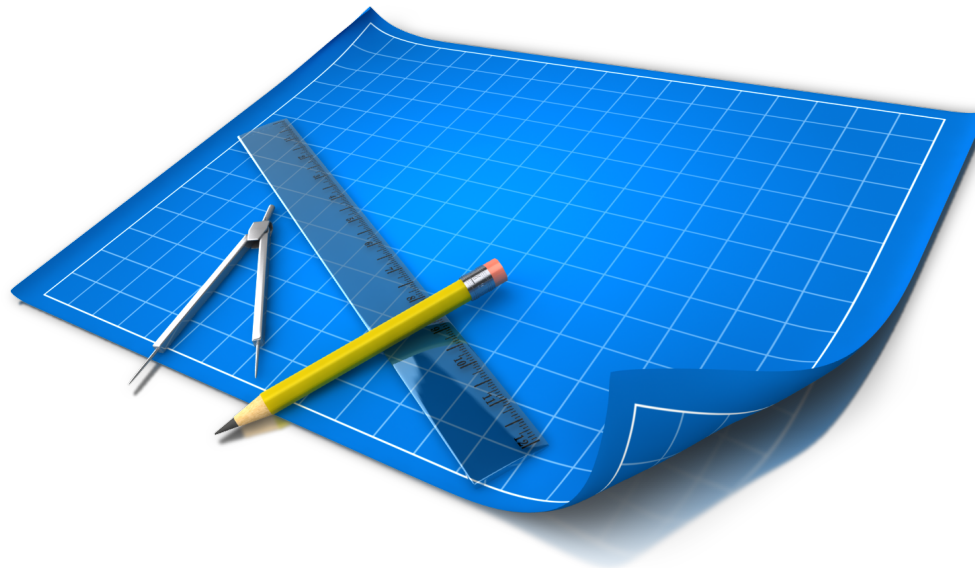
Notes:

1. In Southern Africa, Bluebird is connected in real-time to all the labs so hospitals in Southern Africa do not need to activate the Laboratory HL7 process.
2. Bluebird provides the **Bluebird HL7 Generator** that can produce the required HL7 data streams from Views of your HIS servers without costly development. Please see [intelms.com/896](https://www.intelms.com/896) for details.

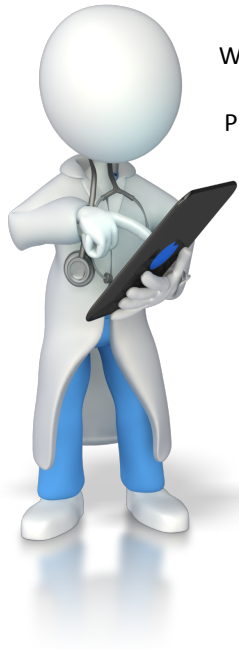
Virtual Hospital

To set up your virtual hospital we need the names and codes of your **wards, rooms, beds and theatres** in the hospital you want set up. Amongst other things, this allows infection control to track patient bed movement.

[Click here](#) to download this specification.



Users



We need to set up and authenticate each User that you wish to have secure access to Bluebird.

Please [click here](#) to download the **User specification**.



Each time a User logs in to Bluebird that User is **authenticated** using the hospital's authentication system. This is done via a Bluebird web service and means that the *hospital* has full control over whether or not a user can log in to Bluebird.

Please [click here](#) to download the **authentication specification**.

Admission Discharge Transfer

Bluebird requires HL7 ADT messages in order to track patient admissions, discharges, transfers etc.

Please [click here](#) to download the specification..



Pharmacy

In order to help optimize antimicrobial use we require the pharmacy to send dispensed drug information as (RDE^O01) HL7 messages to our HL7 listener.

Please [click here](#) to download the specification.



Surgery

If you have a surgical electronic application Bluebird can receive data from that application in a standard HL7 data format.

Please [click here](#) to download the specification.



Laboratory

Laboratory data drives the system. Bluebird supports three different lab data file formats:

- HL7
- Bluebird XML
- XML4

The Bluebird XML is preferred because it has been optimized for infection control and antibiotic stewardship however because many private labs already use XML4 we also support that. HL7 is the international standard and used by the State lab.

Please [click here](#) to download the lab specification.

